



Government of India
Ministry of Earth Sciences



India Meteorological Department

PRESS RELEASE-1

Time of issue: 1200 hours IST

Dated: 03rd August, 2024

**Sub: (A) Deep Depression over southwest Bihar and adjoining northwest Jharkhand
(B) Low Pressure Area over southwest Rajasthan & neighbourhood**

(A) Deep Depression over southwest Bihar and adjoining northwest Jharkhand

A cyclonic circulation formed over Gangetic West Bengal and neighbourhood on 31st July, 2024. It lay over Gangetic West Bengal and south Bangladesh on 1st August, 2024. Under its influence, a low pressure area formed over Gangetic West Bengal and adjoining Jharkhand in the morning (0530 hours IST) of yesterday, the 2nd August, 2024. It moved west-northwestwards and concentrated into a depression over north Jharkhand and neighbourhood in the same evening (1730 hours IST) of yesterday, the 2nd August, 2024. Continuing to move west-northwestwards, it intensified into a deep depression and lay centered at 0830 hours IST of today, the 3rd August over southwest Bihar and adjoining northwest Jharkhand near latitude 24.4°N and longitude 84.4°E, about 50 km northeast of Daltonganj (Jharkhand), 60 km south-southeast of Dehri (Bihar) and 140 km east-southeast of Churk (Uttar Pradesh).

It is likely to continue to move west-northwestwards across northwest Jharkhand, southwest Bihar, southeast Uttar Pradesh and east Madhya Pradesh during next 48 hours.

(B) Low Pressure Area over southwest Rajasthan and neighbourhood

A low pressure area formed over southwest Rajasthan and neighbourhood at 0830 hours IST of today, the 3rd August, 2024. It is likely to move nearly westwards during next 24 hours.

Warnings:

(i) Rainfall Warning:

Jharkhand:

Light to moderate rainfall at most places with **heavy to very heavy rainfall** at a few places is very likely on 3rd and isolated **extremely heavy rainfall** is also very likely over Northwest Jharkhand on 3rd; heavy rainfall at isolated places on 4th August.

.Bihar:

Light to moderate rainfall at most places with **heavy to very heavy rainfall** at isolated places over Bihar on 3rd and 6th, heavy rainfall at isolated places on 4th & 5th August.

Chhattisgarh:

Light to moderate rainfall at most places with **heavy to very heavy rainfall** at a few places and **extremely heavy rainfall** at isolated places also over north Chhattisgarh is very likely on 3rd August.

Contact: Cyclone Warning Division, Office of the Director General of Meteorology, India Meteorological Department, Ministry of Earth Sciences.

E-mail: cyclonewarningdivision@gmail.com, Website: rsmcnewdelhi.imd.gov.in

Spatial rainfall distribution: Isolated: <25%, A few: 26-50%, Many: 51-75%, Most: 76-100%

Rainfall amount (mm): Heavy rain: 64.5 – 115.5, Very heavy rain: 115.6 – 204.4, Extremely heavy rain: 204.5 or more.

East Madhya Pradesh:

Light to moderate rainfall at most places with **heavy to very heavy rainfall** at isolated places is very likely on 3rd & 4th and **extremely heavy rainfall** at isolated places is also very likely on 3rd August.

West Madhya Pradesh:

Light to moderate rainfall at most places is very likely with **heavy to very heavy rainfall** at isolated places is very likely during 3rd to 5th and **extremely heavy rainfall** at isolated places is also very likely on 3rd and 4th August.

East Uttar Pradesh:

Light to moderate rainfall at many places with **heavy to very heavy rainfall** at a few places and **extremely heavy rainfall** at isolated places over southeast Uttar Pradesh is very likely on 3rd and 4th August.

West Uttar Pradesh:

Light to moderate rainfall at many places with heavy to very heavy rainfall at isolated places is very likely on 3rd and isolated heavy on 4th.

East Rajasthan:

Light to moderate rainfall at most places with heavy rainfall at isolated places is very likely during 3rd to 6th; very heavy rainfall at isolated places on 3rd and **extremely heavy rainfall** is very likely on 4th August

West Rajasthan:

Light to moderate rainfall at most places with heavy to very heavy rainfall at isolated places is very likely during 3rd, 5th and 6th and heavy rainfall at isolated places on 4th August

Gujarat region :

Light to moderate rainfall at most places with heavy to very heavy rainfall at isolated on 3rd and 4th and extremely heavy rainfall at isolated places on 3rd.

Saurashtra & Kutch.

Light to moderate rainfall at most places with heavy to very heavy rainfall at isolated on 3rd and heavy rainfall on 4th August..

West Bengal:

Light to moderate rainfall at most places with **heavy to very heavy rainfall** at isolated places is very likely over Sub-Himalayan West Bengal during 3rd to 6th August.

Light to moderate rainfall at most places with isolated **heavy rainfall** is very likely over Gangetic West Bengal on 3rd August.

(ii) Wind warning:

- Strong wind speed reaching 45-55 kmph gusting to 65 kmph is very likely over Jharkhand, south Bihar, north Chhattisgarh and adjoining and east Madhya Pradesh & southeast Uttar Pradesh on 3rd August.
- Strong wind speed reaching 45-55 kmph gusting to 65 kmph is very likely over south Uttar Pradesh, East Madhya Pradesh and adjoining west Madhya Pradesh & north Chhattisgarh, on 4th August.
- Strong wind speed reaching 40-50 kmph gusting to 60 kmph is very likely over west Madhya Pradesh and adjoining east Rajasthan & east Madhya Pradesh on 5th August.

(iii) Impact Expected

- Localized Flooding of roads, water logging in low lying areas and closure of underpasses mainly in urban areas of the above region.
- Occasional reduction in visibility due to heavy rainfall.

- Disruption of traffic in major cities due to water logging in roads leading to increased travel time.
- Minor damage to kutchha roads.
- Possibilities of damage to vulnerable structure.
- Localized Landslides/Mudslides/landslips/mud slips/land sinks/mud sinks.
- Damage to horticulture and standing crops in some areas due to inundation.
- It may lead to riverine flooding in some river catchments (for riverine flooding please visit Web page of CWC)

(iv) Action Suggested

- Check for traffic congestion on your route before leaving for your destination.
- Follow any traffic advisories that are issued in this regard.
- Avoid going to areas that face the water logging problems often.
- Avoid staying in vulnerable structure.

(v) Agromet advisories for Heavy Rainfall likely over various parts of the country

- Make provision for draining out excess water from crop fields to avoid water stagnation in West Bengal, Sub Himalayan West Bengal, Odisha, Jharkhand, Bihar, Rajasthan, Madhya Pradesh, Chhattisgarh.
- Provide mechanical support to horticultural crops and staking to vegetables.

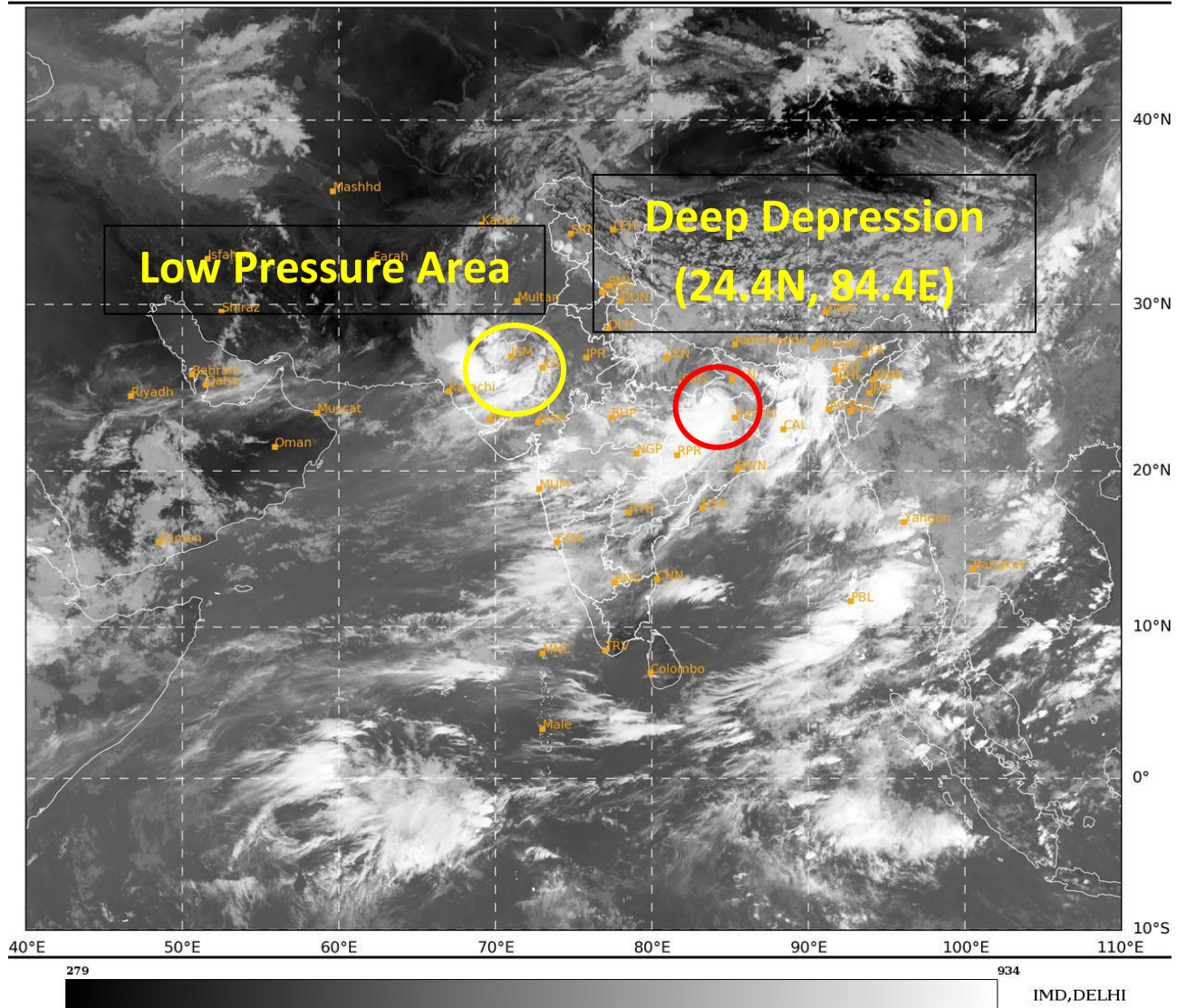
The next press release will be issued at 1430 hrs IST of tomorrow 4th August, 2024.

For regular updates kindly visit www.rsmcnewdelhi.imd.gov.in and www.mausam.imd.gov.in

Annexure - I

SAT : INSAT-3DR IMG
IMG_TIR1 10.8 um
LIC Mercator

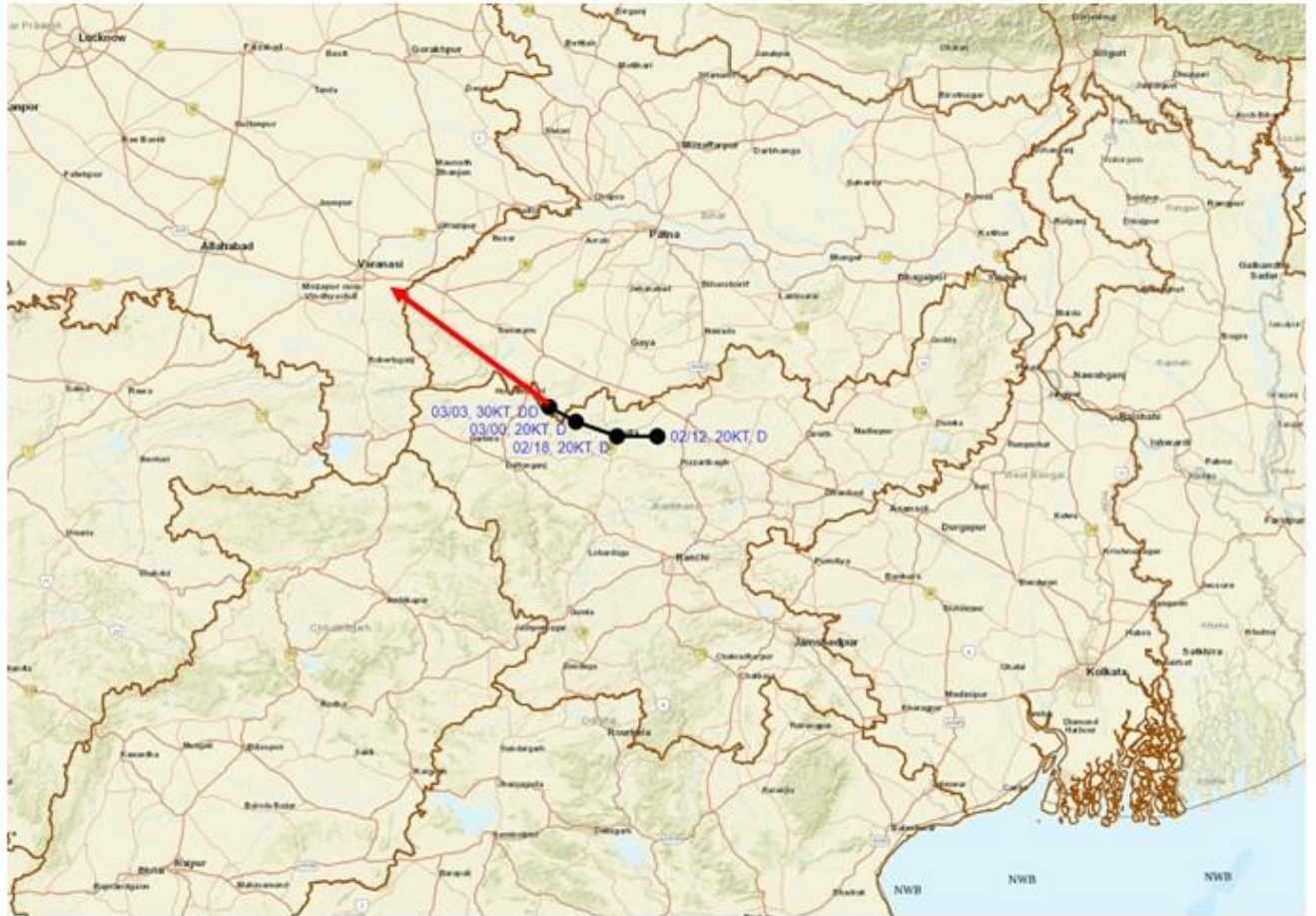
03-08-2024/(0515 to 0542) GMT
03-08-2024/(1045 to 1112) IST



Contact: Cyclone Warning Division, Office of the Director General of Meteorology, India Meteorological Department, Ministry of Earth Sciences.
E-mail: cyclonewarningdivision@gmail.com, Website: rsmcnewdelhi.imd.gov.in
Spatial rainfall distribution: Isolated: <25%, A few: 26-50%, Many: 51-75%, Most: 76-100%
Rainfall amount (mm): Heavy rain: 64.5 – 115.5, Very heavy rain: 115.6 – 204.4, Extremely heavy rain: 204.5 or more.



OBSERVED AND FORECAST TRACK OF DEEP DEPRESSION OVER SOUTHWEST BIHAR AND ADJOINING NORTHWEST JHARKHAND BASED ON 0300 UTC OF 03RD AUGUST, 2024.



DATE/TIME IN UTC
IST=UTC + 0530

L: LOW PRESSURE AREA
WML: WELL MARKED LOW PRESSURE AREA
D: DEPRESSION (17-27 KT)
DD: DEEP DEPRESSION (28-33 KT)
CS: CYCLONIC STORM (34-47 KT)
SCS: SEVERE CYCLONIC STORM (48-63KT)
VSCS: VERY SEVERE CYCLONIC STORM (64-89 KT)
ECS: EXTREMELY SEVERE CYCLONIC STORM (90-119 KT)
SuCS: SUPER CYCLONIC STORM (≥ 120 KT)

- LESS THAN 34 KT
- 34-47 KT
- ≥ 48 KT
- OBSERVED TRACK
- FORECAST TRACK
- CONE OF UNCERTAINTY

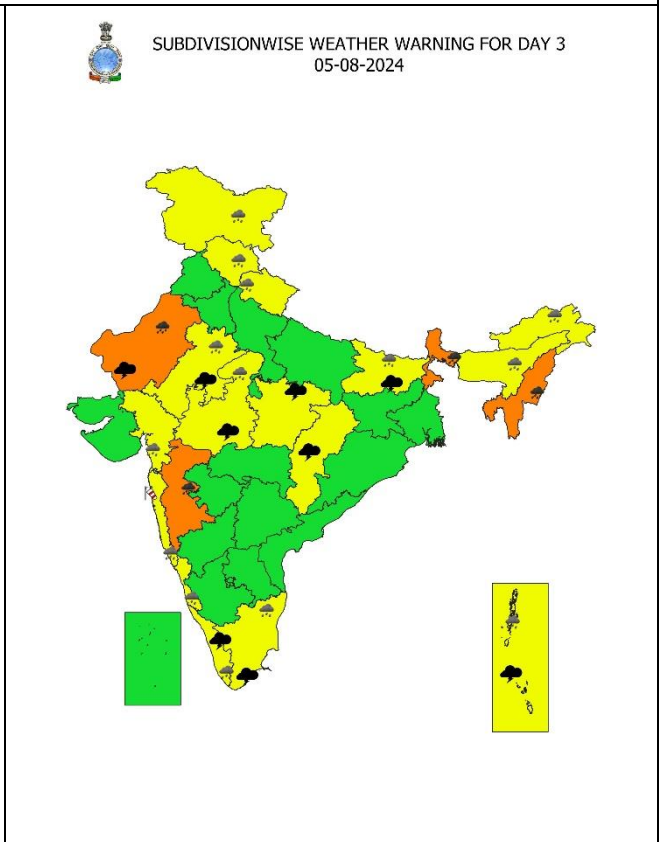
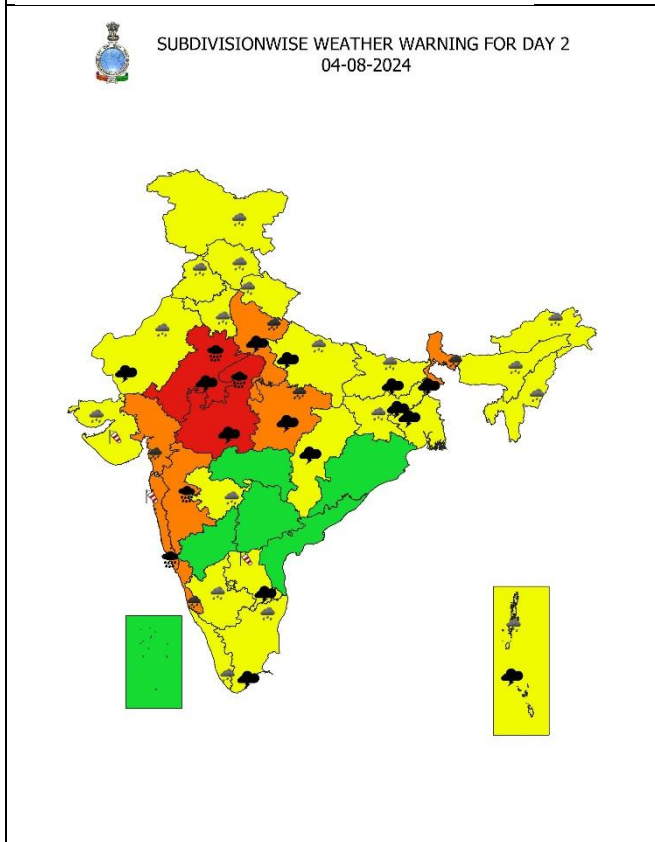
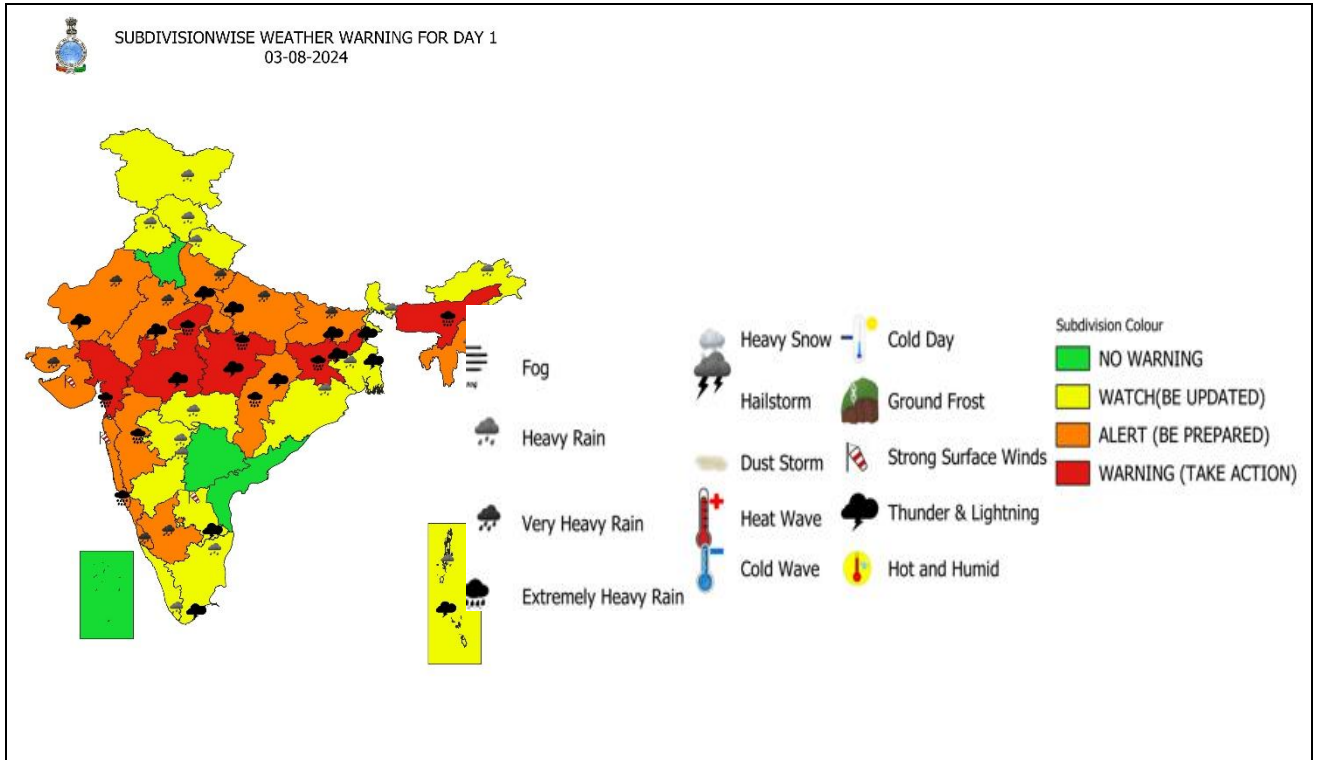
Contact: Cyclone Warning Division, Office of the Director General of Meteorology, India Meteorological Department, Ministry of Earth Sciences.

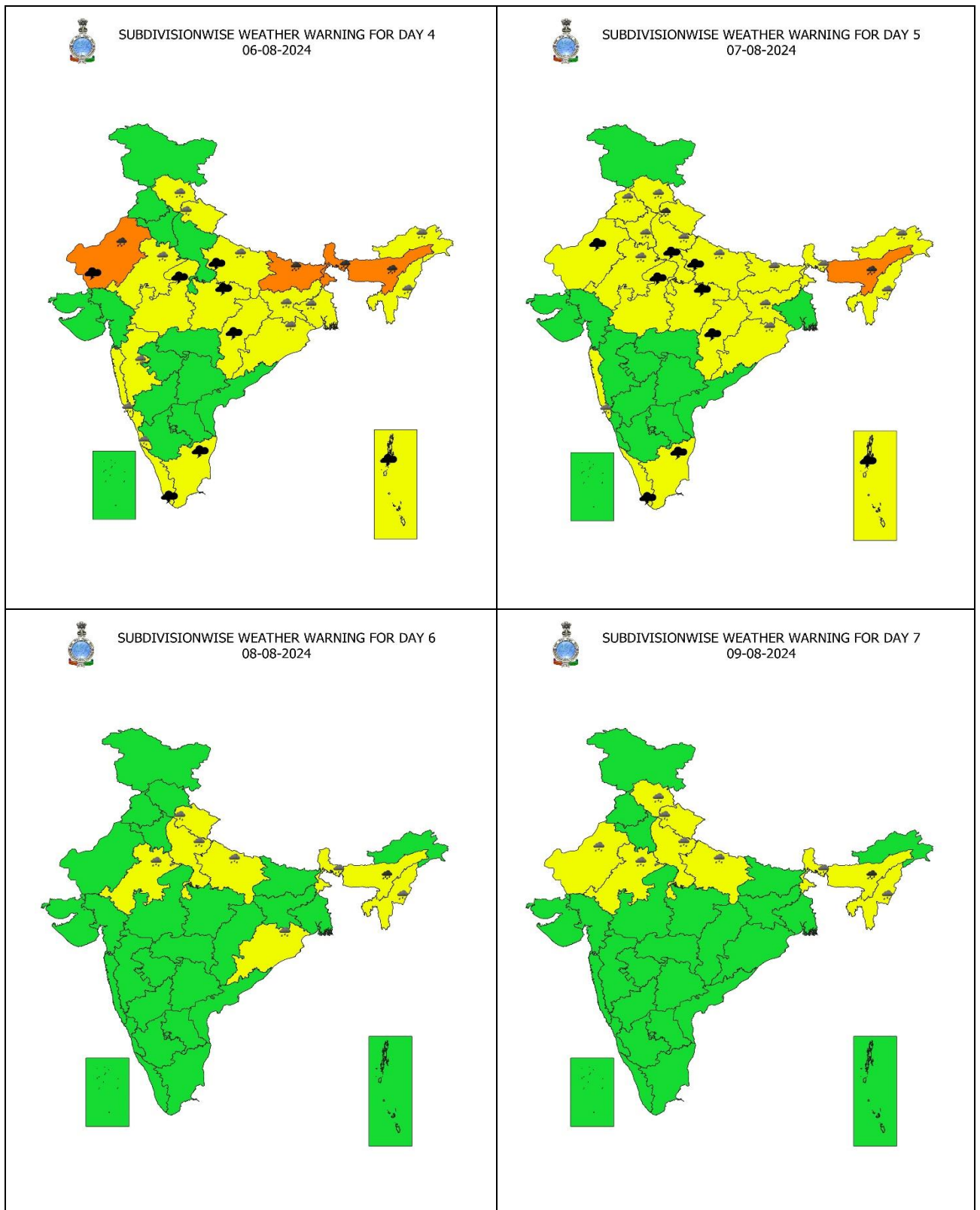
E-mail: cyclonewarningdivision@gmail.com, Website: rsmcnwdelhi.imd.gov.in

Spatial rainfall distribution: Isolated: <25%, A few: 26-50%, Many: 51-75%, Most: 76-100%

Rainfall amount (mm): Heavy rain: 64.5 – 115.5, Very heavy rain: 115.6 – 204.4, Extremely heavy rain: 204.5 or more.

Warning Graphics





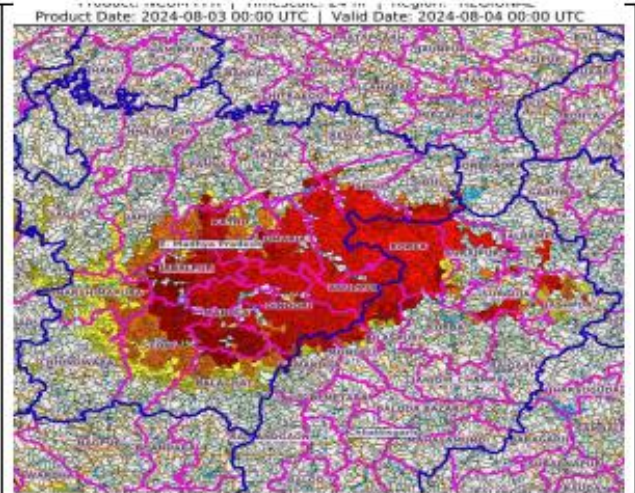
- Action may be taken based on **ORANGE AND RED COLOUR** warnings.
- Vulnerable regions likely urban and hilly areas action may be initiated for heavy rainfall warning.
- As the lead period increases forecast accuracy decreases.

Flash Flood Guidance

24 hours Outlook for the Flash Flood Risk (FFR) till 0530 IST of 04-08-2024 :

Low to Moderate flash flood risk likely over few watersheds & neighbourhoods of **East Madhya Pradesh adjoining Northern parts of Chhattisgarh** and Met Sub-divisions during next 24 hours.

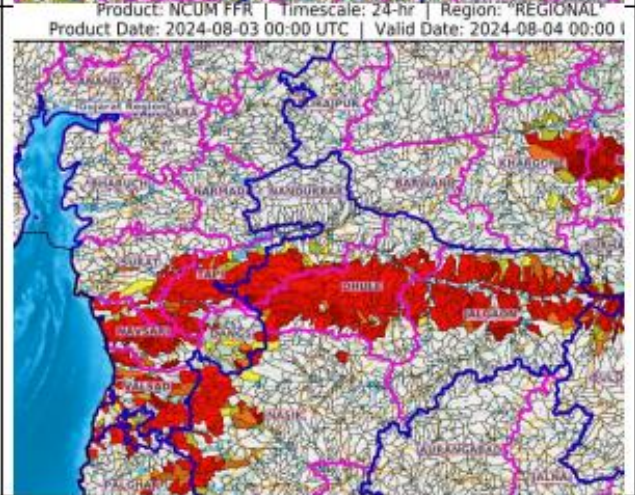
Surface runoff/ Inundation may occur at some fully saturated soils & low-lying areas over AoC as shown in map due to expected rainfall occurrence in next 24 hours.



24 hours Outlook for the Flash Flood Risk (FFR) till 0530 IST of 04-08-2024 :

Low to Moderate flash flood risk likely over few watersheds & neighbourhoods of **South Gujarat Region and Northern parts of Madhya Maharashtra** Met Sub-divisions during next 24 hours.

Surface runoff/ Inundation may occur at some fully saturated soils & low-lying areas over AoC as shown in map due to expected rainfall occurrence in next 24 hours.



Realized Rainfall at 0300 UTC of 02.08.2024

Gangetic West Bengal

Dum Dum (North - 24 Panas) - 10, Mo Saltlake (North - 24 Panas) , Diamond Harbour (South - 24 Panas), Burnpur (Paschim Bardhaman) & Asansol (Paschim Bardhaman) – 8 each, Rajnagar (Birbhum) - 7

Sub Himalayan West Bengal

Buxaduar (Alipurduar) - 7

Bihar

Puraini (Madhepura) - 11, Sherghati (Gaya) - 9, Dobhi (Gaya) & Imamganj (Gaya) - 8, Udai Kishanganj (Madhepura), Kumarkhand (Madhepura), Barachatti (Gaya), Banka (Banka), Rajauli (Nawada), Chausa (Madhepura) & Deo (Aurangabad) – 7 each

Jharkhand

Mandu (Ramgarh) & Ramgarh (Ramgarh) - 27, Bau Kanke (Ranchi) - 26, Purvi Tundi (Dhanbad) - 24, Hendigir (Hazaribag) - 21, Koner (Hazaribag) - 19, Bokaro Thermal (Bokaro), Ranchi Aero (Ranchi) & Ormanjhi (Ranchi) – 17 each, Papunki (Dhanbad) & Ramgarh (Ramgarh) – 16 each, Icar Namkum (Ranchi) - 15, Rajdhanwar (Giridih) & Balumath (Latehar) – 14 each, Putki (Dhanbad), Barkisuriya (Giridih), Bhurkunda (Ramgarh), Tenughat (Bokaro), Maithon (Dhanbad) & Mandu Dvc (Ramgarh) – 13 each, Gobindpur (Dhanbad), Tilaiya (Koderma), Giridih (Giridih), Bandgaon (West Singbhum), Sisai (Gumla) & Jamtara Fmo (Jamtara) – 12 each, Kuru (Lohardaga), Dumri (Giridih), Panchet (Dhanbad), Tundi (Dhanbad), Diyakel Khunti (Khunti), Chandwa (Latehar) & Raidih (Gumla) – 11 each, Dhurki (Garhwa), Daltonganj (Palamu) & Rajmahal (Sahibganj) – 10 each, Murhu (Khunti), Lesliganj (Palamu), Markachou (Koderma), Torpa (Khunti), Maharo (Dumka), Latehar (Latehar), Palamu Dtg (Palamu), Bharno (Gumla), Koderma (Koderma), Latehar Balumat (Latehar) & Patratu (Ramgarh) – 9 each, Ramgarh(bdo) (Ramgarh), Rania (Khunti), Messenjar (Dumka), Nawa Bazar (Palamu), Arki (Khunti), Nandadih (Giridih), Mohanpur (Deoghar) & Garu (Latehar) – 8 each, Barkagaon (Hazaribag), Gola (Ramgarh), Simdega (Simdega) & Amrapara (Pakur) – 7 each

East Rajasthan

Masuda Sr (Ajmer) - 18, Nayanagar/beawar (Ajmer) & Pisagan Sr (Ajmer) – 17 each, Mangliawas Sr (Ajmer) & Bhim (Rajsamand) – 15 each, Tatgarh Sr (Ajmer) - 13, Deogarh (Rajsamand) - 10, Mounntabu Tehsil Sr (Sirohi) & Begu Sr (Chittorgarh) – 9 each, Pushkar Sr (Ajmer) - 8, Raipur (Bhilwara), Hurda Sr (Bhilwara), Mounnt Abu (Sirohi) & Sangod (Kota) – 7 each

Chhattisgarh

Shankarh (Balrampur) - 21, Kusmi (Balrampur) - 18, Rajpur (Balrampur) - 16, Odagi (Surajpur) - 13, Ramanujganj (Balrampur), Pratappur (Surajpur), Samari (Balrampur) & Chando (Balrampur) – 12 each, Raghunath Nagar (Balrampur) - 11, Bhanupratappur (Kanker),

Contact: Cyclone Warning Division, Office of the Director General of Meteorology, India Meteorological Department, Ministry of Earth Sciences.

E-mail: cyclonewarningdivision@gmail.com, Website: rsmcnewdelhi.imd.gov.in

Spatial rainfall distribution: Isolated: <25%, A few: 26-50%, Many: 51-75%, Most: 76-100%

Rainfall amount (mm): Heavy rain: 64.5 – 115.5, Very heavy rain: 115.6 – 204.4, Extremely heavy rain: 204.5 or more.

Balrampur (Balrampur), Wandrafnagar (Balrampur) & Doura Kochali (Balrampur) – 10 each, Bhatgaon (Surajpur), Kelhari (Manendragarh Bharatpur), Janakpur Bharatpur (Manendragarh Bharatpur) & Chalgali (Balrampur) – 9 each, Durg (Durg), Biharpur (Surajpur), Kutaru (Bijapur), Bhairamgarh (Bijapur), Sonhat (Koriya) & Durgkondal (Kanker) – 8 each, Kotadol (Manendragarh Bharatpur), Manora (Jashpur), Latori (Surajpur), Bhaiyathan (Surajpur), Pakhanjur (Kanker), Kunkuri (Jashpur) & Lundra (Surguja) – 7 each

East Madhya Pradesh

Amarpatan (Satna), Ramnagar (Satna) & Matiyari (Mandla) – 9 each, Jaisingh Nagar (Shahdol) - 8, Barhi (Katni), Khurai (Sagar), Venkatnagar (Anuppur), Sarai (Singrauli), Nagode (Satna) & Jaitpur (Shahdol) – 7 each

West Madhya Pradesh

Biaora (Rajgarh) - 12, Sultanpur (Raisen) & Harda (Harda) – 11 each, Raisen (Raisen) - 9, Gairatgang (Raisen) & Bareli (Raisen) – 8 each, Sehore- (Sehore), Udaipura (Raisen), Badi (Raisen), Shamshabad (Vidisha), Berasia (Bhopal) & Ganjbasoda (Vidisha) – 7 each